



W
WHITES

5 Gorringe Road, Salisbury, Wiltshire, SP2 7HZ

£1,150 PCM

About The Property

A character two bedroom, unfurnished, terraced house situated in a one way street within a convenient location on the western side of the city with front garden and rear courtyard.

Accommodation comprises:

Entrance hall with doors leading to both reception rooms. Sitting room overlooks a garden to the front and the dining room has a useful understair cupboard. The kitchen has a good range of units, an integrated oven and hob and there is access to a courtyard area to the rear.

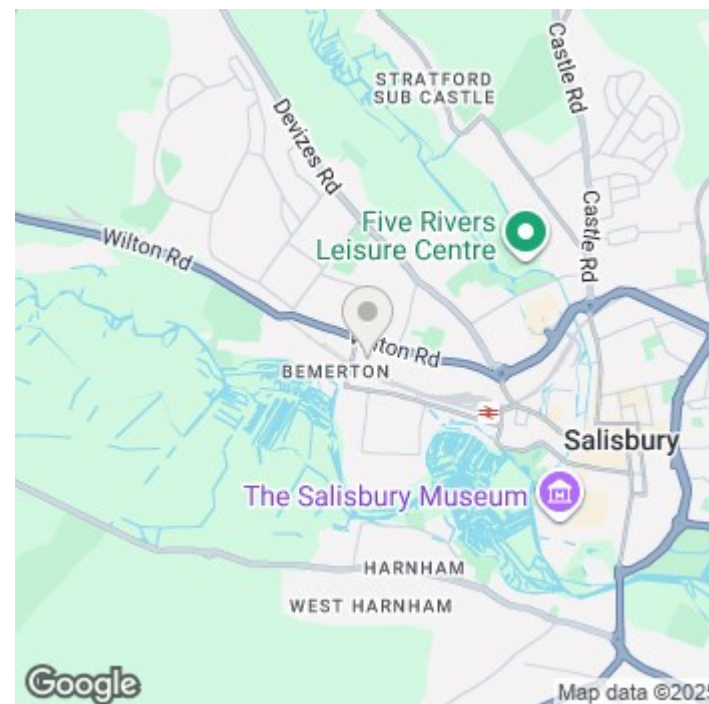
Upstairs there is a modern bathroom with a shower over the bath. Bedroom one, double with fitted cupboards. Bedroom two, double with airing cupboard.

Outside; enclosed front garden with paved pathway and lawn to either side. Enclosed rear courtyard.

The property benefits from gas central heating and double glazing.

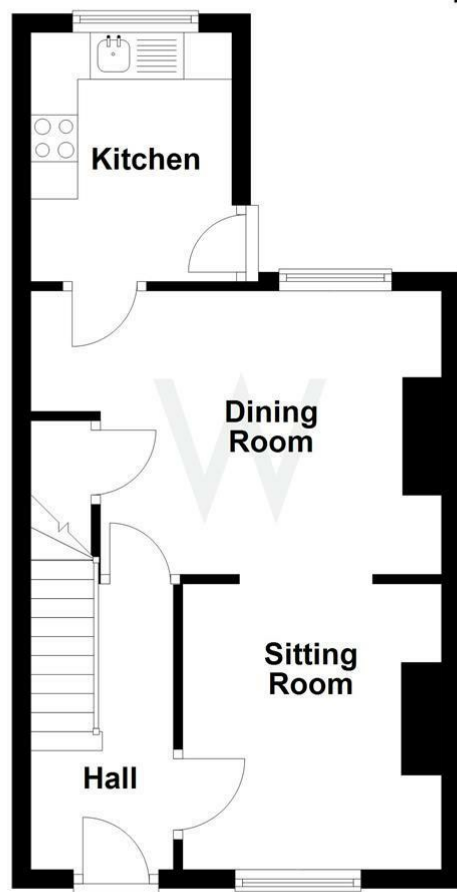
Gorringe Road lies on the western side of the city and provides easy access to the railway station and city centre, reached by a nearby bus route. There are amenities on the nearby Wilton Road including two convenience stores.

- Mid terrace house
- Two reception rooms
- Modern kitchen with oven and hob
- Two double bedrooms
- Bathroom with shower over the bath
- Front garden and rear courtyard
- Double glazing
- Gas central heating
- EPC Band D
- Council tax Band C



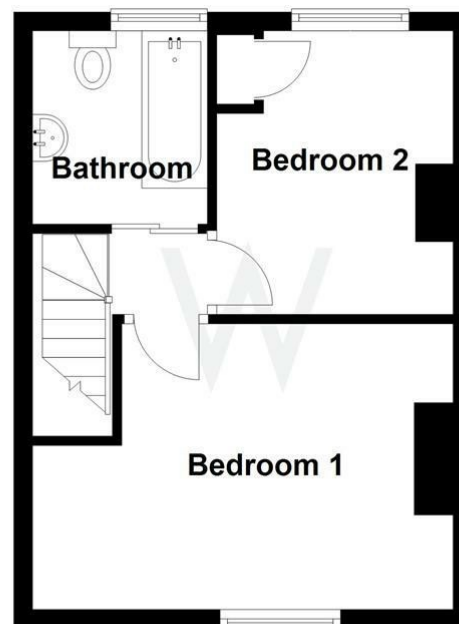


Approx. 33.0 sq. metres (355.5 sq. feet)



Total area: approx. 60.8 sq. metres (654.3 sq. feet)

Approx. 27.8 sq. metres (298.7 sq. feet)



Let available date: 14th November 2025 NB: This date is provisional and will only be confirmed once referencing has been successfully completed.

Property type: House - Mid Terrace

Furnish type: Unfurnished

Deposit: £1,325

Local authority: Wiltshire Council

Council Tax: Band C

EPC: D(57)

Energy Efficiency Rating

	Current	Potential
<p><i>Very energy efficient - lower running costs</i></p> <p>(92 plus) A</p> <p>(81-91) B</p> <p>(69-80) C</p> <p>(55-68) D</p> <p>(39-54) E</p> <p>(21-38) F</p> <p>(1-20) G</p> <p><i>Not energy efficient - higher running costs</i></p>	<p>57</p>	<p>87</p>

England & Wales

EU Directive
2002/91/EC

